

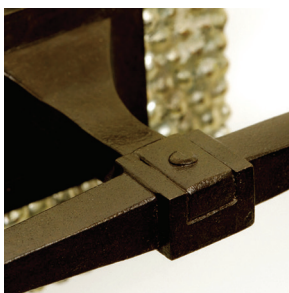
ALLAN KNIGHT

*live beautifully*

allan knight & associates

150 turtle creek blvd | suite 101 | dallas, tx 75207

214 741 2227 | [www.allan-knight.com](http://www.allan-knight.com)



**LS01SM-DBL**

**DRAGÉE SCONCE SMALL BACKPLATE**

finished in silver umber gilt and aged iron

11 ½ x 5 x 6 ¾ h, 4-inch backplate

**ALLAN KNIGHT STUDIO**